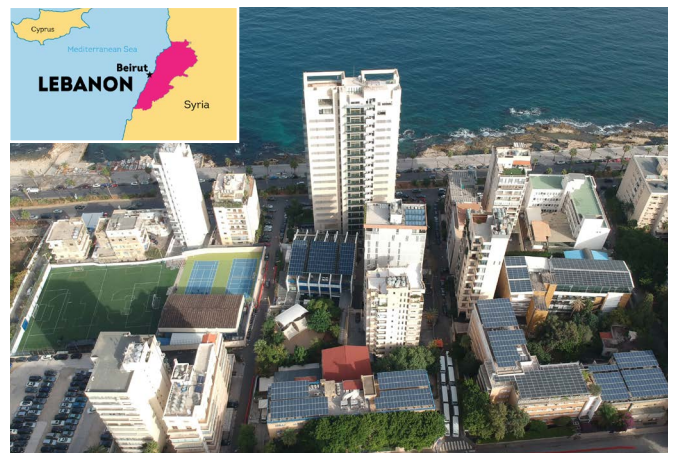


MISSION STATEMENT

ACS empowers students to solve problems with creativity and integrity, to lead well-balanced lives, and to serve Lebanon and the world community with understanding and compassion.

THE SCHOOL COMMUNITY

Established in 1905, the American Community School Beirut (ACS Beirut) is an independent, not-for-profit institution with a multi-cultural student body and an international faculty. ACS Beirut offers a nursery through secondary program for over 900 students. The high school program is college preparatory, sending 100% of its graduates to colleges and universities all over the world. Located in Beirut, a cosmopolitan city on the Eastern Mediterranean, ACS Beirut remains vibrant despite continued political unrest. Enrollment this year has dropped due to an economic depression, banking crisis, political upheaval, the COVID-19 pandemic, and the aftermath of a catastrophic explosion that hit our city on August 4th, 2020. Our community has suffered a lot, but our 117-years old institution remains resilient and committed to providing quality education in Lebanon and the Middle East.



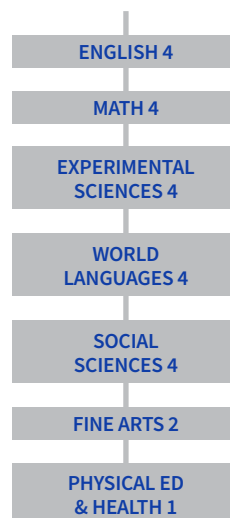
ACS STUDENTS

Student enrollment is reflective of the demographic diversity in Beirut. ACS Beirut has a multilingual and multicultural student body. Students are passionate about issues surrounding social justice, environmental activism, and many more.

67 NATIONALITIES
246 HS STUDENTS
58 SENIORS
 CLASS OF 2023

7:1 STUDENT TO TEACHER RATIO
22 STUDENTS PER CLASS MAXIMUM NUMBER

GRADUATION REQUIREMENTS



GRADING SYSTEM

Letter grades and their equivalents

LETTER GRADE	PERCENTAGE EQUIVALENT
A	93-100
A-	90-92
B+	87-89
B	83-86
B-	80-82
C+	77-79
C	73-76
C-	70-72
D+	67-69
D	65-66
F	BELOW 65

26 CREDITS
 MINIMUM REQUIREMENTS FOR GRADUATION

AMERICAN COMMUNITY SCHOOL BEIRUT

CONTACTS

THOMAS M. CANGIANO Head of School
 JOSEPH CAMPANA HS Principal
 MEGAN BROOKE Counselor mbrooke@acs.edu.lb

CEEB CODE

685100

UCAS NUMBER

48457

IB CODE

0830

ADDRESS

67 Nigeria Street, Jal El-Bahr 2035-8003, Ras Beirut
 P.O. Box 11-8129, Riad El-Solh, Beirut, Lebanon
 T: +961 (1) 374 370 • F: +961 (1) 366 050

ACCREDITATION



New York State
 EDUCATION DEPARTMENT
 Knowledge > Skill > Opportunity

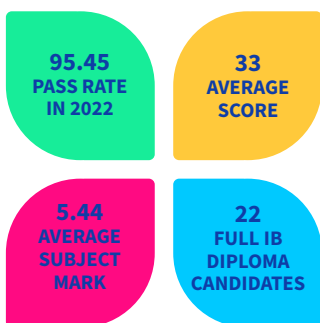
THE CURRICULUM

ACS Beirut offers a challenging curriculum designed for the college-bound student. Within the High School, there are three different diploma programs offered: the Lebanese Baccalaureate, the U.S. High School Diploma, and the International Baccalaureate Diploma (open enrollment in all IB courses). All ACS graduates earn a U.S. High School Diploma; additionally 35% of graduates earned the IB Diploma and 1.67% earned the Lebanese Baccalaureate. All students must complete FOUR school approved community service activities.

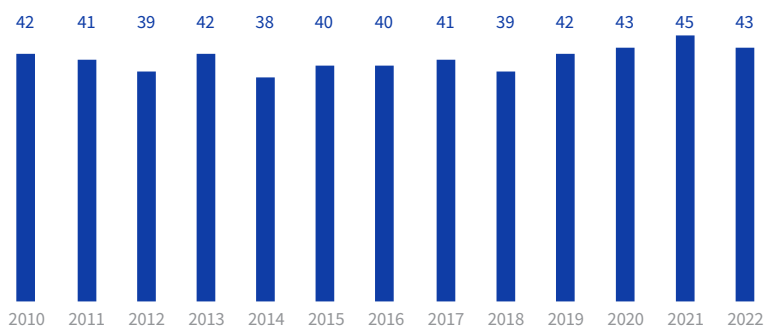
In Grade 11 all students receive extra weight on their GPA from their foreign language, Math and English courses. In Grade 12 Lebanese baccalaureate candidates and American High School diploma students receive extra weight on their GPA for the before mentioned subjects while IB candidates received extra weight on their HL courses. ACS Beirut does not provide class rank. GPA is calculated only on courses taken at the School. All 12th grade students at ACS are college bound and complete a program of study that meets and exceeds the demands of a typical American High School.

GRADUATION REQUIREMENT (26 CREDITS)	ACS/ IB PROGRAM	LEBANESE PROGRAM
ENGLISH (4 CREDITS)	English (Gr. 9/10/12) IB English A: Lang. & Lit. (Gr. 11) IB English A: Lang/Lit.SL/HL (Gr. 11/12)	English (Gr. 9/10) IB English A: Lang. & Lit. (Gr. 11) IB English A: Lang/Lit.SL/HL (Gr. 11/12)
SOCIAL SCIENCES (4 CREDITS)	World History 1750-1914 (Gr. 9) Middle East History 1914-present (Gr. 10) IB Economics (Gr. 11/12) IB Global Politics (Gr. 11/12) IB Psychology (Gr. 11/12) Introduction to Business (Gr.12) Introduction to Psychology (Gr.12)	World History 1750-1914 (Gr. 10) Middle East History 1914-present (Gr. 11) History/Geography/Civics (Gr. 9 - LB) IB Economics SL (Gr. 11) IB Global Politics SL (Gr. 11) IB Psychology SL (Gr. 11) History/Geography/Civics (Gr. 12 - LB) Philosophy / Civilization (Gr. 12 - LB)
MATHEMATICS (4 CREDITS)	Algebra & Geometry (Gr. 9) Algebra II (Gr. 10) Math (Gr. 12) IB Math Applications & Interp SL (Gr. 11/12) IB Math Analysis & Approaches SL (Gr. 11/12) IB Math Analysis & Approaches HL (Gr. 11/12)	LB Math (Gr. 9/10/11/12)
EXPERIMENTAL SCIENCES (4 CREDITS)	Biology (Gr. 9) Physical Science (Gr. 10) IB Biology Year I/II SL/HL (Gr. 11/12) IB Chemistry Year I/II SL/HL (Gr. 11/12) IB Physics Year I/II SL/HL (Gr. 11/12) IB Sports, Exercise and Health Sciences (Gr. 12) Environmental Systems Sciences (Gr. 12)	LB Biology/Chemistry/Physics (Gr. 9/10/11/12)
WORLD LANGUAGES (4 CREDITS)	Arabic B HL 9 Arabic AFL 10 Arabic B SL-HL (Gr. 10) IB Arabic B SL-HL (Gr. 11/12) IB Arabic A:Lang & Lit SL (Gr. 11/12) French Beginners (Gr. 9/10) French SL-HL (Gr. 9/10) IB French AB Initio (Gr. 11/12) IB French B SL-HL (Gr. 11/12)	Arabic (Gr. 9 - LB) Arabic (Gr. 12 - LB)
PHYSICAL EDUCATION (2 CREDITS)	PE (Gr. 9/10/12)	PE (Gr. 9/10)
FINE ARTS (2 CREDITS, IB DP & ACS 1 CREDIT, LB STUDENTS)	2D Visual Arts (Gr. 9/10) 3D Visual Arts (Gr. 9/10) Ceramics (Gr. 9/10) Computer Graphics (Gr. 9/10) Digital Photography (Gr. 9/10) Drama (Gr. 9/10) Music-Band (Gr. 9/10/11/12) Public Art (Gr. 9/10/11/12) Yearbook (Gr. 9/10/11/12)	
OTHER	IB Visual Arts / IB Theatre Arts (Gr. 11) IB Visual Arts HL-SL (Gr. 12) IB Theatre Arts HL - SL (Gr. 12) Theory of Knowledge (Gr. 11/12)	

IB PROGRAM



HIGHEST DIPLOMA POINTS AWARDED TO A CANDIDATE



COLLEGE MATRICULATION

A student at ACS can be assured of receiving an education that is on par with quality international schools. Over the last five years our graduates have matriculated at the following Colleges & Universities:

AUSTRALIA

The University of Melbourne
University of Adelaide

BELGIUM

Katholieke Universiteit Leuven

CANADA

Concordia University - Montreal
McGill University
Simon Fraser University
University of British Columbia
University of Toronto
University of Victoria
Western University
York University

DENMARK

University of Copenhagen

EGYPT

The American University in Cairo

FRANCE

EICAR-International Film School of Paris
IESEG School of Management - Lille
ESMOD

GERMANY

Goethe-Institut

IRELAND

Trinity College Dublin
National University of Ireland Galway

ITALY

Humanitas University

KUWAIT

American University of Kuwait

LEBANON

American University of Beirut
American University of Science & Technology
Lebanese American University
Lebanese International University
Notre Dame University
University of Balamand

MALAYSIA

The University of Nottingham Malaysia

NETHERLANDS

Erasmus Universiteit Rotterdam
Erasmus University College
Technische Universiteit Delft
Universiteit Maastricht
Universiteit Utrecht
Universiteit van Amsterdam
University College Utrecht

PHILIPPINES

Ateneo de Manila University

SPAIN

EU Business School Barcelona
IE University - Madrid Campus
IE University - Segovia
Saint Louis University, Madrid
Universidad Complutense de Madrid

SWITZERLAND

Ecole Hoteliere de Lausanne

UNITED ARAB EMIRATES

American University of Sharjah
Emirates Aviation University
Middlesex University Dubai

UNITED KINGDOM

Architectural Association School of Architecture
Bournemouth University
Brunel University London
Cardiff University
City University of London
Guildhall School of Music & Drama
Hult International Business School - London
Imperial College London
King's College London
Queen Mary University of London
Regent's University London
School of Oriental and African Studies,
University of London
The University of Edinburgh
The University of Manchester
The University of Nottingham
The University of Sheffield
The University of Warwick
The University of Winchester
University College London
University of Exeter
University of Glasgow
University of Kent
University of Surrey
University of Sussex
University of Westminster

UNITED STATES

Academy of Art University
Bard College
Barnard College
Bennington College
Binghamton University
Boston College
Boston University
Brooklyn College of the CUNY
Brown University
California State University, Long Beach
Carleton College
Central Washington University
Columbia College Chicago
Columbia University
Cornell University
Davidson College
DePaul University
Duke University
Embry-Riddle Aeronautical University-
Daytona Beach
Emmanuel College
Emmanuel College
Emory University

Fordham University
George Mason University
Georgetown University
Harvard University
James Madison University
Johns Hopkins University
Knox College
Loyola Marymount University
Macalester College
Marist College
Michigan State University
Minerva Schools at KGI
New York University
Northeastern University
Oberlin College of Arts and Sciences
Orange Coast College
Pepperdine University
Pima Community College
Pomona College
Purdue University
Rochester Institute of Technology
San Diego State University
SciencesPo- Columbia University
Dual BA Program
SouthernCalifornia Institute of Architecture
St. Francis College
St. Olaf College
Swarthmore College
Syracuse University
The Evergreen State College
The George Washington University
The University of Arizona
The University of Texas, Austin
University at Buffalo
(The State University of New York)
University of California, Berkeley
University of California, Los Angeles
University of California, Riverside
University of California, San Diego
University of California, Santa Barbara
University of California, Santa Cruz
University of Chicago
University of Colorado at Boulder
University of Denver
University of Florida
University of Illinois at Urbana-Champaign
University of Kentucky
University of Mary Washington
University of Massachusetts, Amherst
University of Massachusetts, Boston
University of Michigan, Dearborn
University of Pennsylvania
University of Richmond
University of San Francisco
University of South Florida
University of Tampa
University of Virginia
University of Washington
University of Washington, Bothell
University of Wisconsin, Madison
Virginia Commonwealth
University Virginia Tech
Wentworth Institute of Technology
Wheaton College MA
Wheelock College
Williams College